

Try on "Yukata" workshop 外国人留学生のための ゆかた着付け体験

Purpose 目的

For the transmission of "Kimono" culture
by learning experience of how to wear "yukata"
浴衣着装体験をきっかけに
「きもの」文化を世界へ発信すること

3.授業用の教材作成の概要

- 着装ビデオ
 - ・ 着装および畳み方ビデオ作成
・ (日本語版、英語版、中国語版)
- テキスト教材
 - ・ ゆかたがわかるテキスト教材作成
・ (日本語版、英語版)
- Web教材
 - ・ ゆかたがわかるe-learning用ウェブ教材作成



男女ひとえ長着(浴衣)の着装・たたみ方のDVDを作成(日本語版、英語版、中国語版)、浴衣の文化についてテーマ学習の教材を作成(日本語版、英語版)、さらにウェブ上の着装e-learning教材も作成した。DVDの作成・編集は、大妻女子大学総合情報センターメディア教育開発センターで実施。テキスト教材は、メンバーの呑山氏・斉藤氏が編集。ウェブ教材は、それらを元に編集した。e-learningサイトは以下のURL <http://kimono-bunka.ynu.ac.jp>

Schedule of today's class 本日のスケジュール

- はじめに Introduction 13:00-13:10
 - スタッフ紹介 Introduction of member
 - パンフレットを用いたゆかたに関わる解説 Information about "Yukata" by using pamphlet
- 浴衣の着装示範 Demonstration of how to wear "Yukata"
 - 女性用 For female 13:10-13:30
 - 男性用 For male
 - たたみ方の示範 How to fold "Yukata"
- 参加者の着装体験 Try on "Yukata" by yourself
 - 記念撮影 Take Photos 13:30-15:30
 - 自由行動(散策など) Free time
 - 浴衣のたたみ実習およびアンケート回答 Fold Yukata & answer questionnaire

Information about "Yukata"

- What is Yukata? ゆかたとは?
- History of Yukata 浴衣の歴史
 - Suvaival yukatas
- Type & patterns of fabric 浴衣の柄・模様
- Names of each part of yukata
ゆかたの各部名称
- Constructive characteristics of yukata
浴衣の構成
 - Japanese kimono VS western style clothing
 - "Yukata" for male VS one for female

Introduction of our member

teacher

Yayoi Satsumoto (Prof. of Yokohama National University)

Students

- Izumi Nakada 中田いずみ,
- Xiaoyang Xu 齊曉陽,
- Liu Yu 劉雨,
- Mayumi Ino 井野真由美,
- Takuya Aoyagi 青柳卓也,
- Nao Tobori 戸堀菜穂

What is the "Yukata"?

②Unlined hemp kimono worn in summer season, usually made of cotton



History of "Yukata"

・Unlined hemp kimono originally worn by nobles when taking a bath.

・With success of cotton cultivation in Japan during the Muromachi period (14th to 16th century), cotton Yukata become popular in daily clothing life.

1 Survival of old Yukatas-1

Meiji period

Late 19th to early 20th century

Cotton stencil dye



Butterfly and turtle's shell patterns are dyed with indigo color and black

1 ゆかたの歴史

文化学園服飾博物館所蔵のゆかた

昭和初期のゆかた

木綿地 絞り染

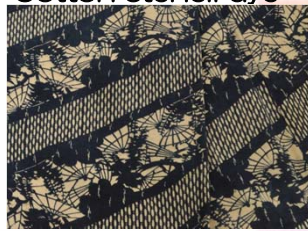


Big tie dye There is "kata-ate" (absorbent sweat at shoulder)"and "Ishikiate" (to prevent getting out of shape)

1 Survival of old yukatas-2

Meiji period

Cotton stencil dye



Umbrella and mesh There diagonalstripe patterns are dyed

1 ゆかたの歴史

文化学園服飾博物館所蔵のゆかた

昭和40年代のゆかた

木綿地 絞り染



昆沙門亀甲文(昆沙門天の鎧に因む文様)を折り縫い絞りで表している。

1 Survival of old yukatas-3

Taisho period

Cotton tie-dye



One of indigo dye, "Shibori-zome" (tie dye) patterns

Type & Pattern of fabric
浴衣の柄・模様

2 Types & Patterns of Fabric

Types of Fabric

OKA-MOMEN flat-woven cotton fabric	MEN-RO translucent fabric	MEN-TUMUGI slightly thick fabric
MEN-KOUBAI thin plaid fabric	ASA-CHIJIMI fabric with crisp and cool touch of hemp	SHIBORI-ZOME tie-dye cotton fabric

Patterns of yukata

Dragonfly とんぼ	Paper fan うちわ
なでしこ Dianthus	

Designs & Patterns

柄・模様

松鳴海紋りが有名

女性用の浴衣は、風鈴、うちわ、朝顔、金魚、花火などの夏の季節感のある模様も多いのですが、近年では、これにとらわれず、様々な模様が用いられます。男性用には、綿、格子などの抽象柄が多いようです。

Name of each part of "yukata".

Collar 襟

Sleeves 袖

Front body 前身頃

Back body 後ろ身頃

"Okumi" panel おくみ

Patterns of Yukata

Clematis 鉄線	Iris 菖蒲	Morning glory Flower 朝顔	Hydrangea 紫陽花
Sun flower 向日葵	Pink 撫子	Lily 百合	Gold fish 金魚

Constructive characteristics of Yukata

- Japanese kimono VS western style clothing
- "yukata" for male VS one for female

Configuration characteristics

Japanese Kimono vs Western style clothing

- Flat construction
- Straight cutting
- Without using pattern
 - Easy to sew with a big, few parts.
 - Store it compactly by flatly folding.

- 3 dimensional construction
- Curve cutting
- Using curve shape pattern
- It consists of detailed parts, and needlework is difficult.
- Store it in closet with hanger.

Demonstration with explanation of how to wear Yukata

- For female
- For male

Differences between "yukata" for male and one for female

★Sleeves

The inner side of sleeve for males called "Ningyo", is sawn. This part for female called "Furi" is not sawn and long.

- Male : Ningyo (sawn)
- Female : Furi (not sawn and long)

★Position of belt knot

- Male : tightened by the height of the hipbone.
- Female : tightened by the height of an under-bust.

★Length of yukata

- Male : the length of yukata, "Mitake" is as same as "height of the shoulder", called "Kitake"
- Female : length of yukata is almost same as wearer's height. So the length of yukata is adjusted by folding at the waist height, which is called "Ohashori",

★Yukata's body

The inner side of kimono itself opposite to sleeve for males is sawn. This part for female is not sawn and called "Miyatuguchi".

Try on Yukata

6 Preparing to dress in the Yukata

Generally, Yukata is worn next to the skin and with bare feet. However, underwear is donned to absorb perspiration when worn out of doors. There are different types of Ohi hata for different ages and sex. There are Kaku Ohi and Kaku Ohi for men, while Hanabishi Ohi (Ukon wide) is for women and Sanjaku Ohi is for children. Women in Ohi is a Hanabishi style, while men in the Kaku Ohi is a Kaku no Kaku style. It is safe to don an Ohi that is of a color or an opposite color used in the Yukata.

Women

- ① Yukata
- ② Underwear for Yukata
- ③ Hanabishi Ohi
- ④ Kaku Ohi
- ⑤ Dase-Jime
- ⑥ Geta

Men

- ① Yukata
- ② Underwear
- ③ Towel
- ④ Hoku Ohi
- ⑤ Kaku Ohi
- ⑥ Koshi Himo
- ⑦ Geta

7 How to Wear a Yukata: Women's BUNKO-MUSUBI

- ① If the width of Yukata does not fit the wearer's frame, bring the top of the left panel UWA-MAE SEKI SHITA to your right hip bone to set the width of your frame panel UWA-MAE SEKI SHITA. SEKI SHITA may move out of back center during this procedure.
- ② Now, wrap in the UWA-MAE SEKI SHITA in the top as UWA-MAE SEKI SHITA in the right side of the body. Wrap the KOSHI HIMO with around the upper part of your hip bone. The UWA-MAE SEKI SHITA is too wide, fold it inward at an angle.
- ③ Now, wrap in the UWA-MAE SEKI SHITA in the top as UWA-MAE SEKI SHITA in the right side of the body. Wrap the KOSHI HIMO with around the upper part of your hip bone. The UWA-MAE SEKI SHITA is too wide, fold it inward at an angle.
- ④ Place together the two KAKO SEKI SAKI and adjust so that SEKI SHITA rests in the center of your back. The SEKI SHITA should be folded slightly higher so that it is in the center of the right SUITAKAE.
- ⑤ Smooth out the bump of OHAASHORI on the left UWA-MAE from inside the fold, keeping the right side of the fold slightly higher so that it is in the center of the right SUITAKAE.

We will now try to dress the Yukata, an unlined kimono for summer. Here are the things you will need for dressing the Yukata. For women, we need the Yukata, Hanabishi Ohi (a half-width sawn), Koshi Himo (a soft tie), Dase-Jime (a flat belt), and a kimono slip or underwear. For men, we need the Yukata, an underwear (a pair of knee-length pants in crease), a towel, Kaku Ohi (a soft material) or Kaku Ohi (a half-width sawn), and Koshi Himo (a soft tie). You wear a pair of wooden sandals, Geta, on barefoot. Keep all necessary articles, belts and low width shoes easy reach, draped on the back of a chair or on a towel hanger, for example, so you won't have to crouch down to pick them up.

Acquiring the Yukata

Yukata can be acquired by buying a piece of fabric and arranging with a tailor to sew or by sewing it yourself. Ready-made Yukata are also available and increasingly obtained by the young. These ready-made Yukata can be obtained from as low as ¥2,000 while hand-made Yukata show a potential pricing of ¥20,000 to ¥60,000.

Women's Yukata vs Men's Yukata

Women's Yukata

Characteristics of Women's Yukata

- MITSUKUCHI: An opening on the side of the body at the sleeve seam
- FURI-YATUKUCHI: An opening on the sleeve below the sleeve seam; also called the FURI opening

Men's Yukata

Characteristics of Men's Yukata

- UCHI-AGE: Part folded and sewn in for possible later alteration to adjust the MITSUKI to be the length from shoulder to ankle
- NINGYOU: Part below the sleeve seam sewn closed on men's Yukata

How to wear Men's Yukata

8 How to Wear a Yukata: Men's KAINO-KUCHI-MUSUBI

- ① Fold the width of the Ohi in half from the top. The folding line of the Ohi is called the WA.
- ② Hold both a) and b) with your right hand and reach behind the back. Reach behind the back with your left hand and hold on to the TE-SAKI at a).
- ③ Wrap DOCHI around your hip bone twice or more according to your build. Junior high students would wrap it around three times while grown up men would wrap it around twice.
- ④ Pull the double-fold DOCHI from behind TE-SAKI to tie.
- ⑤ Turn up the TE-SAKI and wrap over it with the rest of the DOCHI.
- ⑥ Hold on to the DOCHI to tie wrap of your side at past a).
- ⑦ Decide on the length of the KAINO-KUCHI-MUSUBI from the length on the side seam line.
- ⑧ The Ohi should meet a little lower at the front and higher at the back.
- ⑨ Hold on to the Ohi at a). Making sure the wrap is tight, hold the rest of the Ohi toward.
- ⑩ Create the two ends with the double-fold TABE over the left TE-SAKI.
- ⑪ Pull TABE and TE-SAKI up to the foot at an angle.
- ⑫ Tighten creases.
- ⑬ Keep holding on to the knot.

浴衣の着装のポイント Check Point of wearing Yukata

- ①えりcollar ②おはしより Ohasyori ③
背中心 Center of back
④すそ Hem line ⑤帯 (貝の口) belt

②おはしより Ohasyori



【check!】
・しわが多くて広がっている
・ぴったり整っていない



おはしよりのしわを
わきよせて整えると
着姿が引き立つよ

①えりCollar Female



【check!】
・胸元がはだけている



上前えりを右に、下前は
身八つ口から手を入れて
て左に引いて整えよう

③背中心



【check!】
・背中がたるんでいる
・しわになっている

おはしよりを下に引いて
背中心を整えよう

①えりcollar male



【check!】
・胸元がはだけている

腰ひもの位置で身頃を
閉じる方向に引っ張る
腰ひもを結ぶ時、広がら
ないように注意しよう

④すそ Hem line



【check!】
・裾(すそ)が広がっている

腰ひもの位置で身頃を
引き上げ整えよう
腰ひもを結ぶ時、広がら
ないように注意しよう

⑤帯（貝の口）



①背中心
【check!】

- ・背中の真ん中でまっすぐ。
- ・しわは脇によせる。

【check!】

⑤貝の口

- ・結び目がきつすぎない

参加者の着装体験

Try on “Yukata” by yourself

- 記念撮影 Take Photos
- 自由行動（散策など）Free time
- 浴衣のたたみ実習およびアンケート回答 Fold Yukata & answer questionnaire