

Refining our Undergraduate Degrees



Yokohama National University's Grand Design

Since its establishment YNU has fostered the creation of practical knowledge through education and research in line with its principles of "Be Active, Be Innovative, Be Open, Be Global." At the same time, by educating students who will assume key roles in society and broadly disseminating our research results into academic and social networks, we have worked to share this knowledge with the larger community.

Our university's mission is to contribute to human welfare and the ongoing development of society, and we consider it our responsibility to equip students with sophisticated practice-oriented research skills and professional expertise. We aim to fulfill our social responsibility as a national university by achieving our institution-wide goal of developing YNU into an international hub for practical academic endeavors.

With these ideals as a foundation and through our commitment to advanced and practical education grounded in high-level research, we at YNU will continue to develop our distinctive institutional character and cultivate useful knowledge that circulates into society.



Our Guiding Light

Building on our four fundamental principles – Be Active, Be Innovative, Be Open, Be Global – Yokohama National University (YNU) has codified its core educational goals, with the aim of enhancing our undergraduate degree education across the board. United under this common purpose, each Faculty at YNU (i.e., Engineering Science, Education & Human Sciences, Economics, and Business Administration) has developed its own specific educational objectives for its undergraduate degree program and clearly defined the associated attributes to be cultivated in its undergraduate students. All of us at YNU are working together to achieve these educational goals and objectives.

Core educational Goals for Undergraduate Degree Programs at YNU

- Expose students to the wealth of intellectual assets in the arts and sciences, develop their capability to make use of these assets at an advanced level and foster their capacity to play leadership roles in society.
- Use education grounded in research results to nurture rich intellect and sensibility in our students, as well as cultivate their power to think and make the judgments required to formulate solutions to a broad range of problems.
- Help students contribute to the realization of a world that operates on the principle of co-existence with respect for social, cultural and natural diversity by developing the ability of students to communicate and interact with a wide variety of people beyond the boundaries of a single society or nation.
- Cultivate high ethical standards and augment each student's sense of responsibility and motivation to engage actively with problems and the search for solutions.

YOKOHAMA National University

YNU initiative

July 2011
(English Version: September 2011)

This pamphlet was prepared by:

Educational Affairs Division at Yokohama National University
79-1 Tokiwadai, Hodogaya-Ku, Yokohama-shi 240-8501, Japan

Telephone: +81-45-339-3104 Fax: +81-45-339-3100

<http://www.ynu.ac.jp/english>



YNU
YOKOHAMA National University

Achieving Our Educational Goals

YNU has instituted a Grand Design to achieve our educational goals at the undergraduate level. This initiative is based on the following four core policies: (1) Degree Conferral, (2) Implementation of Our Programs, (3) Admission of Students, and (4) the Continuous Improvement of Educational Quality. Each of these policies is described below to show how we are striving to equip our students with powerful and meaningful undergraduate degrees.

Policy 1

Degree Conferral:
Degrees with broad acceptance beyond Japan

When conferring an undergraduate degree at YNU, our faculty objectively evaluate if the student has acquired practical knowledge and skills, with sufficient depth in an academic specialization, to ensure our degrees can have broad international acceptance.

■ Four types of practical knowledge and skills we seek to cultivate in our students

Expertise and Liberal Arts

- Fundamental expertise in a field of specialization
- Broad knowledge of the liberal arts that enables a person to make connections across the social, cultural and natural realms

Intellect

- Capacity for logical thinking that can devise effective processes for problem solving
- Capacity for critical thinking that challenges existing frameworks of understanding
- Capacity for creative thinking that applies knowledge and skills to create new forms of value

Communicative Proficiency

- Communication skills that drive positive interaction with other peoples and cultures through the selection of appropriate language, media and other tools
- Leadership skills that facilitate collaboration with a diverse range of individuals in formulating and implementing solutions to problems

Ethics and Responsibility

- Capacity for self-motivated study so that the learning process can continue throughout life
- Sense of responsibility and internal drive to participate actively in society
- Highest ethical standards that are based on the way human behavior should be when one considers more than just narrowly construed personal interest

■ Broadly accepted undergraduate degrees, awarded on the basis of objective assessment

- Degree conferral shall have a high degree of transparency, based on objective and standardized processes for assessment of educational attainment.
- Degrees shall be internationally competitive in the commonality and equivalence of the academic achievement they represent.

Policy 2

Implementation of Our Programs:
Effective undergraduate education

In order to cultivate practical knowledge in our students, we have systematically organized the study of liberal arts and the specialized education offered at YNU. Our aim is to realize an original and creative approach to undergraduate education, involving the following efforts.

- To foster an understanding of diverse value systems, instill high ethical standards, and develop integrated and creative abilities: [We promote education that incorporates cutting-edge research findings.](#)
- To equip students with interdisciplinary skills and broad perspectives: [We have instituted sub-major programs, in addition to our regular majors.](#) These programs are designed to develop each student’s capacity to explore issues and identify problems.
- To further promote each student’s capacity to explore problems and formulate creative solutions: We are pursuing the well-planned and effective introduction of [interactive and participatory class formats](#).
- To connect individual learning experiences to the wider world: We are developing and introducing, throughout the entire university, [programs that cultivate high-level communication skills and an international outlook](#).
- To facilitate each student realizing the full potential of his or her talents: [We offer career counseling from the initial enrollment stage](#) that helps students integrate their outlooks on work, society and life in general.

Policy 3

Admission of Students:
Attracting motivated individuals who want to contribute to society

YNU seeks to enroll students who wish to apply themselves, as they study and interact with friends from around the world in the superb natural setting of our Tokiwadai Campus, to developing the intellectual flexibility and creativity that is needed to identify and solve complex problems. Our enrollees should be motivated to become key players in society who will contribute to the development of communities that operate on the principle of co-existence at both local and global levels.

■ I want to develop real skills!

For people who want to develop genuinely useful skills to help them become leaders in society

■ I want to acquire new insights!

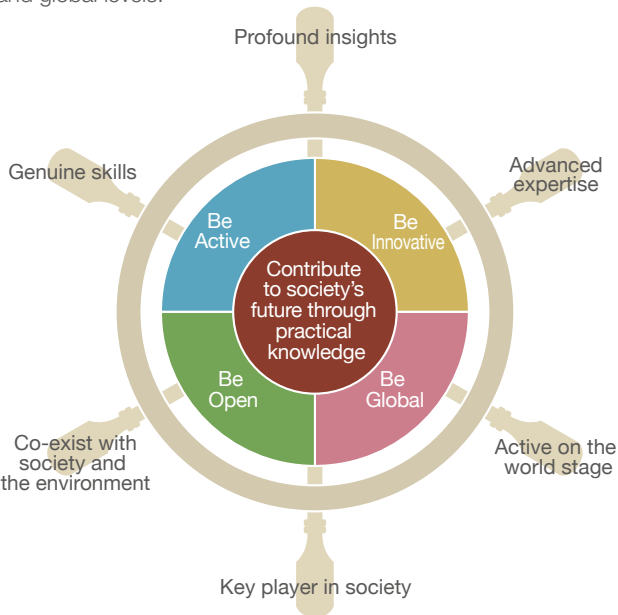
For people who want to acquire profound knowledge and wisdom through creative study and research underpinned by a can-do attitude and respect for the spirit of scientific inquiry

■ I want to play a part on the world stage!

For people who want to enhance their ability to communicate with many international students in a cosmopolitan environment and take on active roles in the global community

■ I want to use my expertise for the benefit of society!

For people who want to acquire more advanced expertise in graduate school and contribute to society as specialists in various fields and occupations



Policy 4

Continuous Improvement of Educational Quality:
Maintaining a consistently high standard of education

With the aim of continually improving the abilities of all people employed by YNU who conduct research, teach and support our students, we have implemented faculty and staff development programs. We are committed to working responsibly toward the ongoing improvement and enhancement of our curricula, class content and provision of student services.

■ Faculty Development (FD)

Faculty Development (FD) is the term given to a series of integrated initiatives by university faculty members, conducted for the purpose of improving and enhancing curricula, class content, teaching methods and other educational aspects of our university.

- Modify degree conferral policies and practices
- Improve educational policies and programs
- Revise policies and practices for selecting enrollees
- Enhance FD and SD policies and programs etc.

■ Staff Development (SD)

Staff Development (SD) is the term given to a series of integrated initiatives by university administrative staff members pertaining to managerial and administrative practices, conducted for the purpose of achieving more effective and efficient provision of support for research, teaching and services to students, including support in areas such as career counseling.

- Class evaluation by students
- Self-inspection and self-evaluation by academic faculty members
- Curricular evaluation
- Assessment of educational performance
- Survey employers of our graduates etc.

